



## Getting a COVID Test

TCRHCC encourages anyone who has symptoms, even just a runny nose or sore throat, or suspects an exposure to get tested.

### *LeChee Health Facility*

3 Miles South Coppermine Road  
LeChee, AZ

By Appointment Only  
To Schedule: (928) 689-4900

**Monday - Thursday**

**1:00 PM - 2:00 PM DST**

### *Sacred Peaks Health Center*

6300 US-89, Flagstaff, AZ 86004

By Appointment Only.  
To Schedule: (866) 976-5941

**Monday - Friday**

**10:00 AM - 12:00 PM MST**

**1:00 PM - 4:30 PM MST**

### *Tuba City Regional Health Care*

#### *Drive-Thru Tent*

167 N Main Street  
Tuba City, AZ 86045

**Monday - Friday**

**7:30 AM - 4:30 PM PM DST**

## Getting a COVID-19 Vaccine

- *Tuba City Regional Health Care COVID-19 Vaccination Clinic*

**Monday- Friday: 8:00 AM - 4:00 PM DST**

**Pfizer Vaccine | Age 12 & Older**

**Moderna Vaccine | Age 18 & Older**

- *Sacred Peaks Health Center*

**Monday - Friday: 8:00 AM - 9:30 AM MST**

**Wednesday: 1:00 PM - 4:30 PM MST**

**Pfizer Vaccine | Age 12 & Older**

- *LeChee Health Facility*

By Appointment Only  
To Schedule: (928) 698-4900

**Wednesdays and Thursdays**

**1:00 PM - 4:00 PM DST**

**Pfizer Vaccine | Age 12 & Older**

## 3rd Doses

People who are severely immunocompromised due to:

- Active cancer treatment
- Prior transplant and immunosuppressant medication
- Primary Immunodeficiency
- HIV
- Other immunosuppressant medications

**should** get a 3rd dose of Pfizer or Moderna (same as received for first 2 doses) at least 4 weeks after the 2nd dose.

**For those that received Pfizer ONLY:**

**The following people SHOULD get a 3rd dose of the Pfizer/BioNTech vaccine 6 months or more after their 2nd dose:**

- **65 or older**
- **50-64 with underlying health conditions, including overweight, diabetes and more**

Additionally, the following people MAY get a 3rd dose of the Pfizer/BioNTech vaccine 6 months or more after their 2nd dose

- 18-49 and have underlying health conditions, including overweight, diabetes and more
- 18-64 and have a job that may increase the risk of exposure to COVID-19

Please bring your vaccination card with you. We will need to verify your previous doses and update your vaccination card. If you have misplaced your card, please let us know upon arrival.

Proof of underlying conditions or job exposure risk is NOT required.

You can get your 3rd dose (or your 1st or 2nd):

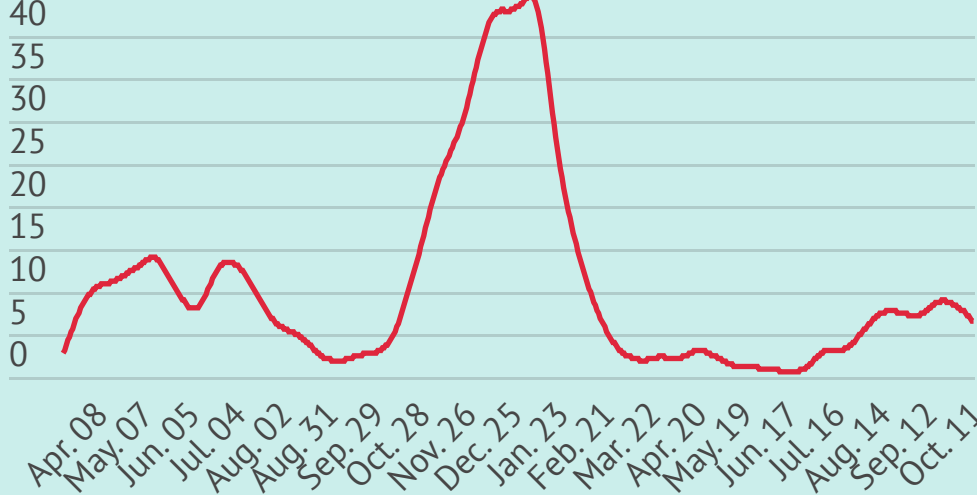
1. At our drive thru tent on main campus 8 am - 4 pm Monday-Friday excluding holidays.
2. When you come for a medical appointment in any of our primary care clinics
3. Sacred Peaks Health Center 8 am - 9:30 am Monday-Friday by appointment

# Pandemic Status

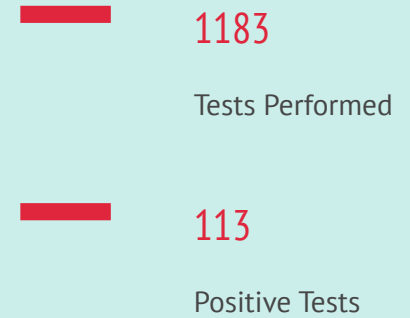
The risk of disease and the severity of the COVID-19 pandemic in our community is defined by the Navajo Nation and TCRHCC according to the five color coded risk levels below.

Risk Level Community Spread Disease Risk	Level Purple: Severe Outbreak Critical	Level Red: Extensive Very High	Level Orange: Substantial High	Level Yellow: Moderate Moderate	Level Green: Zero to Minimal Low
--	--	--------------------------------------	--------------------------------------	---------------------------------------	--

## Daily New Cases



## Tests in Past Two Weeks



Tuba City Service Area is currently at **Risk Level Red**. In other words, considering current case numbers, percentage of positives in people getting tested, and public health and hospital capacity, our communities are at very high risk of disease.



In the last week, Tuba City Service Area has seen the highest number of COVID-19 cases since February. Most of these cases are in unvaccinated people and are related to social gathering or travel. New data after the Delta variant shows that unvaccinated people are 5 times more likely to get infected, more than 10 times more likely to be hospitalized, and more than 10 times more likely to die from COVID-19.

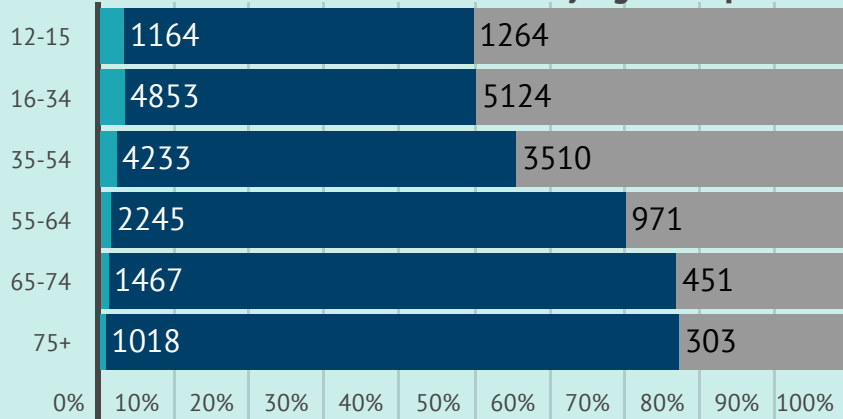
Even though it is less likely, vaccinated people can still catch the virus and can spread it to others.

- Wear a mask
- Stay 6 feet from others
- Avoid social gathering, especially with unvaccinated people
- Limit unnecessary travel and avoid indoor dining
- Get tested if any symptoms or any possible exposures
- Wash your hands.

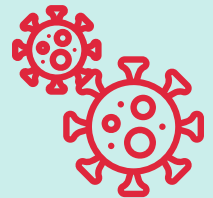
# Vaccination Update

Of those 12 and older who live in the following chapters/communities Tuba City, Coalmine, Cameron, Dinnebito, Lechee, Bodaway-Gap, Coppermine, Kaibeto, Tonalea, and Moencopi Villages and have been seen at least once at any TCRHCC location in the last three years, 64.3% have received at least one dose and 61.7% are fully vaccinated. For those 65 and older 82% have had at least 1 dose and 81.3% are fully vaccinated. If you or your 12 and older child is not yet fully vaccinated, TCRHCC highly encourages vaccination now. Stay tuned, we anticipate the vaccine being approved for 5-11 year olds later this fall!

## Service Unit Vaccination Rates by Age Group



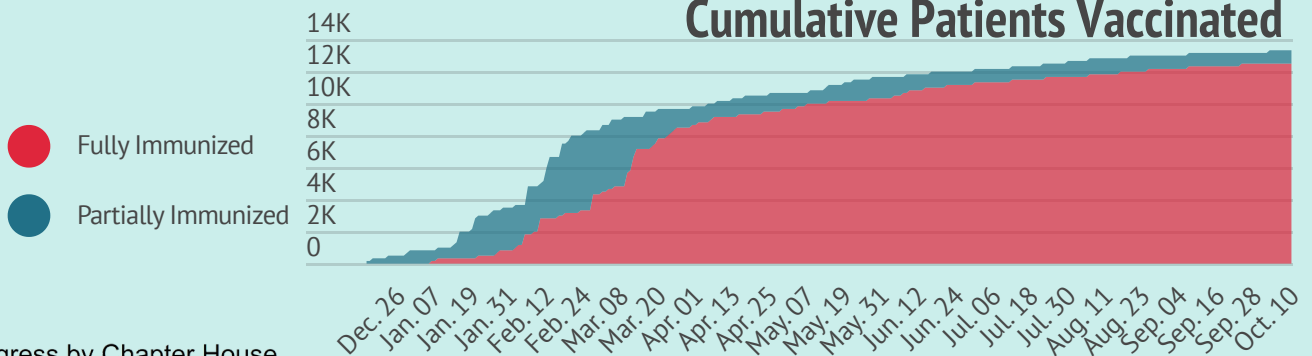
- Partially Vaccinated
- Fully Vaccinated
- Unvaccinated



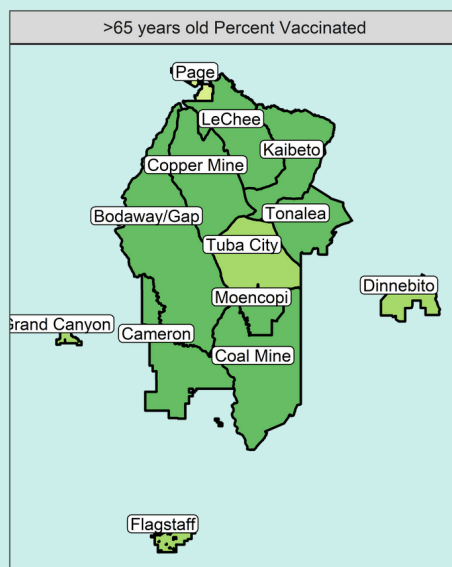
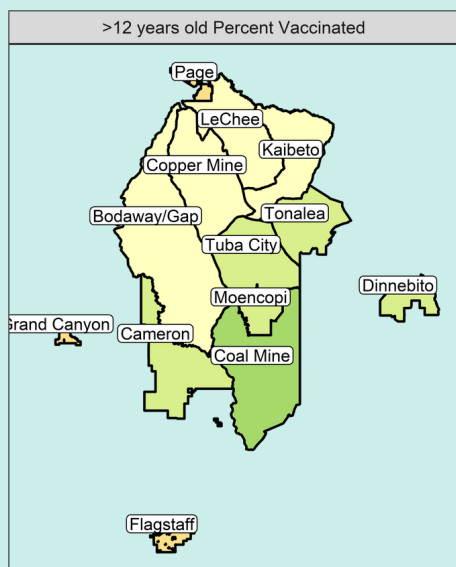
We have seen some (about 1.5% of those vaccinated) cases of COVID-19 in people that are fully vaccinated. Since February, 15 vaccinated people have been hospitalized here or transferred elsewhere for COVID for short periods and made or are currently making a full recovery. No vaccinated people in our area have been intubated, put on a ventilator, or died of COVID. TCRHCC has had only one case of severe adverse reaction to the vaccine and that person fully recovered. 375 million doses of Pfizer and Moderna have been given in the US so far. More than 32,000 have been given right here in our Service Area. **Getting fully vaccinated today is the safest choice.**

TCRHCC is proud to say that by November 9th, all TCRHCC employees, contractors, or volunteers will be fully vaccinated unless they have a medical contraindication (verified severe allergy to a vaccine ingredient.)

## Cumulative Patients Vaccinated



## Vaccination Progress by Chapter House



- 0-9
- 10-19
- 20-29
- 30-39
- 40-49
- 50-59
- 60-69
- 70-79
- 80-89
- 90-99
- 100



**12,529**  
Patients Fully  
Vaccinated

---

**13,288**  
Patients with at  
least 1 Dose